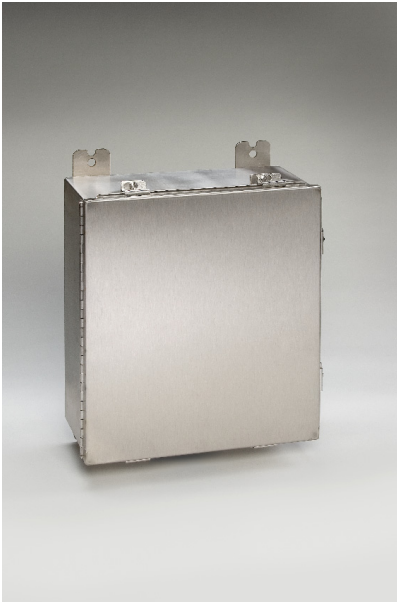


# TYPE 4X STAINLESS STEEL JIC CONTINUOUS HINGE ENCLOSURES



## Industry Standards

UL 508A, Type 2, 3R, 4, 4X, 12, 13

NEMA Type 2, 3R, 4, 4X, 12, 13



UL File E235575

TYPE 4X ENCLOSURES

### Application:

Designed for use as instrument enclosures, electric, hydraulic or pneumatic control housings, electrical junction boxes or terminal wiring enclosures. Provides protection where equipment may be hosed down or exposed to other wet conditions or where corrosion may be a problem.

### Construction:

- Formed 304 stainless steel.
- Smooth, continuously welded seams without knockouts, cutouts, or holes.
- Welded brackets provided for enclosure mounting.
- Doors secured with stainless steel continuous hinge and JIC style clamps.
- Doors sealed with closed cell, oil resistant gasket.
- Internal weld studs are provided for mounting optional inner panels.
- Grounding stud provided.

### Finish:

- Cover and enclosure are stainless steel with smooth brushed finish.

### Accessories:

- Back panels (see reference chart, pg. 6-1).

### Options:

- Custom sizes available. Please call for details.

Enclosure Catalog Number	Enclosure Size H x W x D	Body/Door Steel Gauge	X	Back Panel Catalog Number			Back Panel Size A x B	Back Panel Gauge
				PP-0806	P2-0806	PS-0806		
N4XJCH-080604SS	8.00" x 6.00" x 4.12"	16/16	3.62"	PP-0806	P2-0806	PS-0806	6.750" x 4.875"	14
N4XJCH-100804SS	10.00" x 8.00" x 4.12"	16/16	3.62"	PP-1008	P2-1008	PS-1008	8.750" x 6.875"	14
N4XJCH-121006SS	12.00" x 10.00" x 6.12"	16/16	5.62"	PP-1210	P2-1210	PS-1210	10.750" x 8.875"	14
N4XJCH-141206SS	14.00" x 12.00" x 6.12"	16/16	5.62"	PP-1412	P2-1412	PS-1412	12.750" x 10.875"	14
N4XJCH-141208SS	14.00" x 12.00" x 8.12"	16/16	7.62"	PP-1412	P2-1412	PS-1412	12.750" x 10.875"	14
N4XJCH-161406SS	16.00" x 14.00" x 6.12"	14/14	5.62"	PP-1614	P2-1614	PS-1614	14.750" x 12.875"	14
N4XJCH-161408SS	16.00" x 14.00" x 8.12"	14/14	7.62"	PP-1614	P2-1614	PS-1614	14.750" x 12.875"	14



211 INDUSTRIAL COURT  
WABASHA, MN 55981

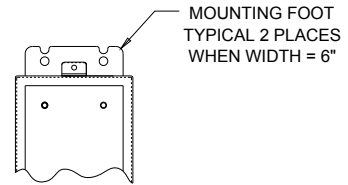
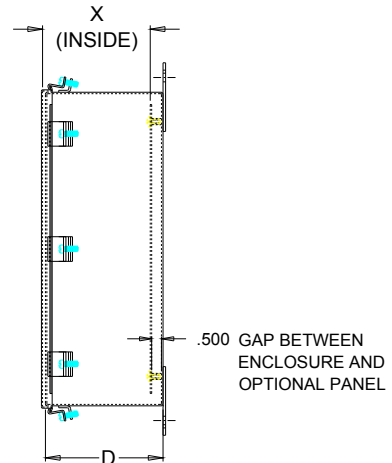
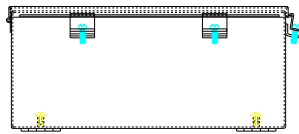
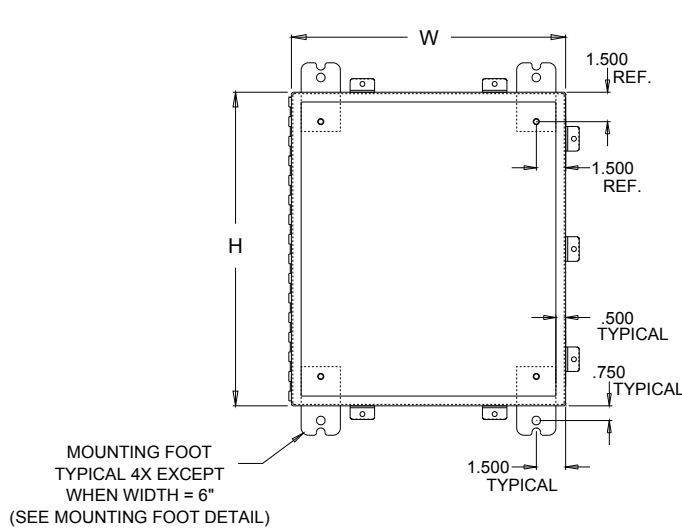
Phone: (651) 565-3395

Fax: (651) 565-2787

E-mail: [info@thomasindustriesinc.com](mailto:info@thomasindustriesinc.com)  
[www.thomasindustriesinc.com](http://www.thomasindustriesinc.com)

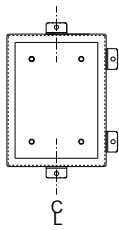
\*DATA SUBJECT TO CHANGE WITHOUT NOTICE

# TYPE 4X STAINLESS STEEL JIC CONTINUOUS HINGE ENCLOSURES

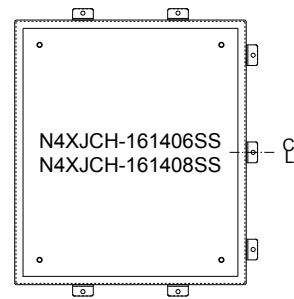
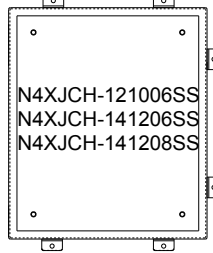
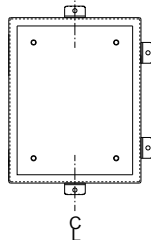


MOUNTING FOOT DETAIL

N4XJCH-080604SS



N4XJCH-100804SS



211 INDUSTRIAL COURT  
WABASHA, MN 55981

Phone: (651) 565-3395  
Fax: (651) 565-2787  
E-mail: [info@thomasindustriesinc.com](mailto:info@thomasindustriesinc.com)  
[www.thomasindustriesinc.com](http://www.thomasindustriesinc.com)