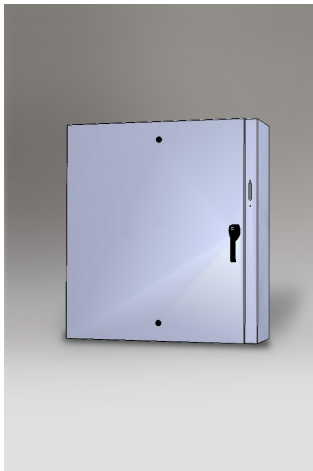


TYPE 4 FLUSH DOOR DISCONNECT ENCLOSURES



Industry Standards
UL 508A, Type 4, 12, 13
NEMA Type 4, 12, 13



UL File E235575

TYPE 4 ENCLOSURES

Application:

Designed to house most standard type disconnects. Disconnect switch (or circuit breaker) and operating mechanism are not furnished with enclosure. See detailed drawing for additional information in regards to supplied cutouts.

Construction:

- Steel fabricated doors and enclosures.
- Smooth, continuously welded seams without knockouts, cutouts, or holes.
- Formed lip on enclosure to keep out liquids and contaminants.
- Door is secured with ¼ turn slotted latches and 3-point latching system.
- Door is sealed with closed cell, oil resistant gasket.
- Hidden hinges for clean, aesthetic appearance.
- Stainless steel hinge pins.
- Mounting holes in back of body for direct mounting or mounting of optional wall-mounting bracket kit.
- Collar studs are provided for mounting optional inner panels.
- Grounding provisions are provided.
- Print pocket is provided.

Finish:

- ANSI 61 gray powder coating inside and out over phosphatized surfaces. Optional panels are powder coated white.

Accessories:

- Back panels (see reference chart, pg. 6-3).
- Wall-mounting bracket kit (see reference chart, pg. 7-3).

Options:

- Custom sizes and colors available. Please call for details.

Enclosure Catalog Number	Enclosure Size H x W x D	Body/Door Steel Gauge	X	Qtr.Turn Latch Qty.	3 Pt. Latch Qty.	Back Panel Catalog Number	Back Panel Size A x B	Back Panel Gauge
N4FDDC-423712	42.00" x 37.50" x 12.00"	14/14	12.075"	2	1	PSN-4236	39.00" x 33.00"	12
N4FDDC-483712	48.00" x 37.50" x 12.00"	14/14	12.075"	2	1	PSN-4836	45.00" x 33.00"	12
N4FDDC-483716	48.00" x 37.50" x 16.00"	14/14	16.075"	2	1	PSN-4836	45.00" x 33.00"	12
N4FDDC-603712	60.00" x 37.50" x 12.00"	14/14	12.075"	2	1	PSN-6036	57.00" x 33.00"	12
N4FDDC-603716	60.00" x 37.50" x 16.00"	14/14	16.075"	2	1	PSN-6036	57.00" x 33.00"	12

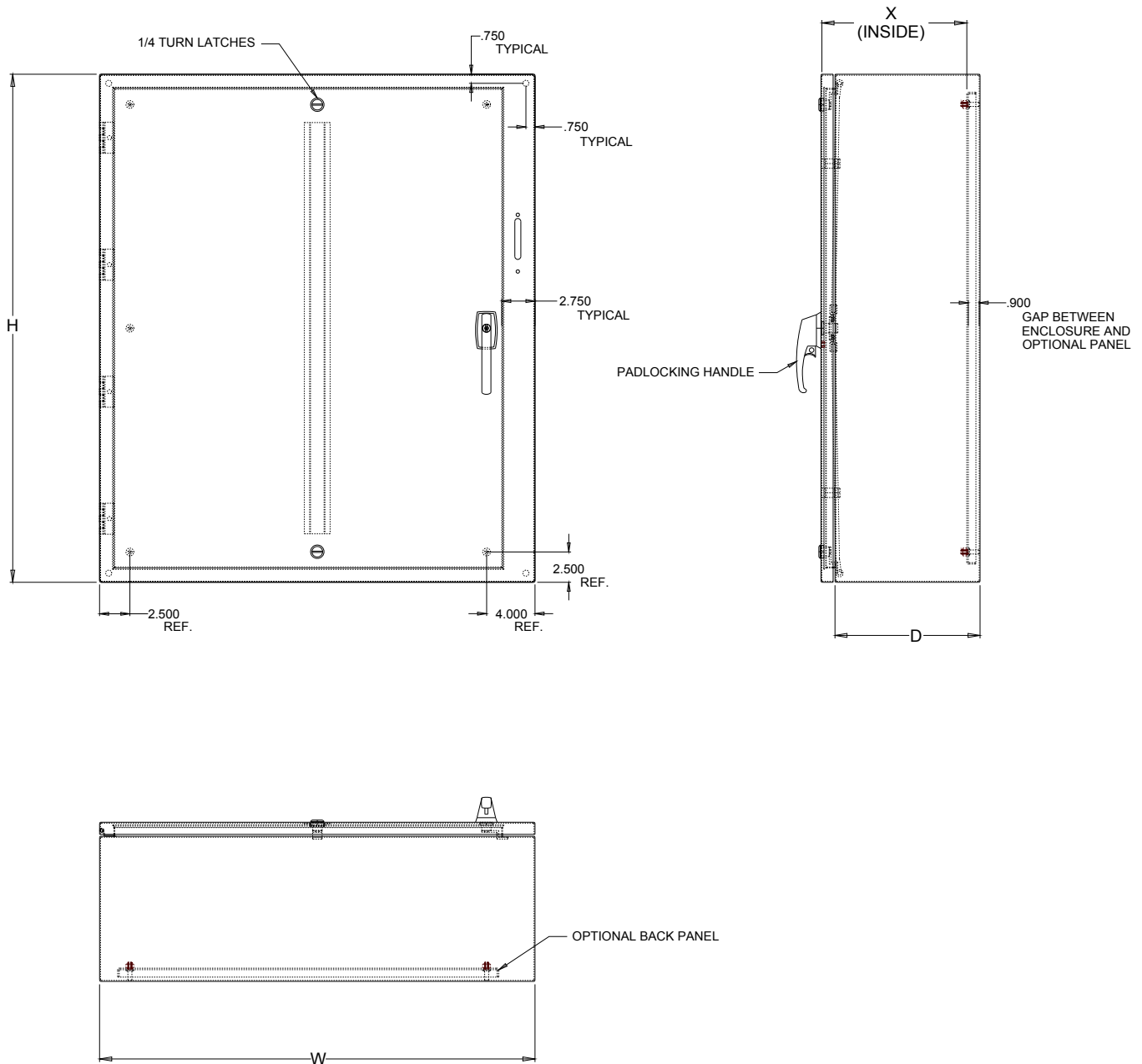


211 INDUSTRIAL COURT
WABASHA, MN 55981

Phone: (651) 565-3395
Fax: (651) 565-2787
E-mail: info@thomasindustriesinc.com
www.thomasindustriesinc.com

*DATA SUBJECT TO CHANGE WITHOUT NOTICE

TYPE 4 FLUSH DOOR DISCONNECT ENCLOSURES



211 INDUSTRIAL COURT
WABASHA, MN 55981

Phone: (651) 565-3395
Fax: (651) 565-2787
E-mail: info@thomasindustriesinc.com
www.thomasindustriesinc.com

*DATA SUBJECT TO CHANGE WITHOUT NOTICE