

TYPE 1 SCREW COVER ENCLOSURES WITH PERFORATED BACK PANELS

1-8

TYPE 1 ENCLOSURES



Industry Standards
UL 508A, Type 1
NEMA Type 1



UL File E235575

Application:

Designed for use as a junction box and pull box in general indoor applications.

Construction:

- Steel fabricated enclosure and cover
- Mounting holes supplied on back of enclosure.
- Various sizes of knockouts are supplied on all four sides of the enclosure (see drawing for knockout pattern).
- Cover design allows for removal without fully removing screws.
- Cover secured with plated steel screws.
- Standoffs provided for mounting fully perforated back panel.
- Back panel is constructed of 14 gauge fully perforated mild steel.

Finish:

- ANSI 61 gray powder coating inside and out over phosphatized surfaces. Panels are powder coated white.

Options:

- Custom sizes and colors available. Please call for details.

Enclosure Catalog Number	Enclosure Size H x W x D	Body/Door Steel Gauge	X
SC-060604H	6.00" x 6.00" x 4.00"	16/16	3.363"
SC-080804H	8.00" x 8.00" x 4.00"	16/16	3.363"
SC-101004H	10.00" x 10.00" x 4.00"	16/16	3.363"
SC-121204H	12.00" x 12.00" x 4.00"	16/16	3.363"
SC-060606H	6.00" x 6.00" x 6.00"	16/16	5.363"
SC-080806H	8.00" x 8.00" x 6.00"	16/16	5.363"
SC-101006H	10.00" x 10.00" x 6.00"	16/16	5.363"
SC-121206H	12.00" x 12.00" x 6.00"	16/16	5.363"

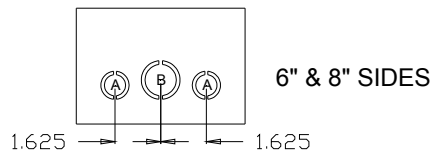
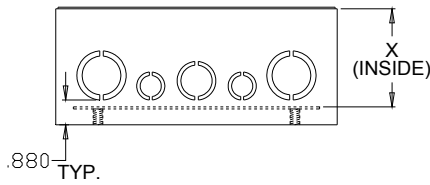
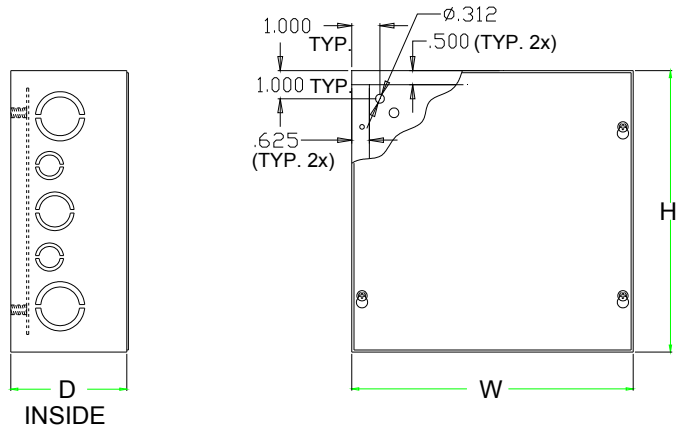


211 INDUSTRIAL COURT
WABASHA, MN 55981

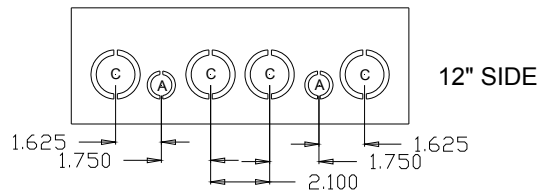
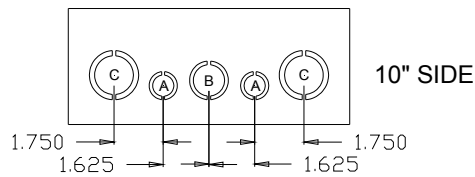
Phone: (651) 565-3395
Fax: (651) 565-2787
E-mail: info@thomasindustriesinc.com
www.thomasindustriesinc.com

*DATA SUBJECT TO CHANGE WITHOUT NOTICE

TYPE 1 SCREW COVER ENCLOSURES WITH PERFORATED BACK PANELS



KNOCKOUT SIZE CHART (CONDUIT SIZE)	
A	1/2" - 3/4"
B	3/4" - 1"
C	1" - 1-1/4"



211 INDUSTRIAL COURT
WABASHA, MN 55981

Phone: (651) 565-3395
Fax: (651) 565-2787
E-mail: info@Thomasindustriesinc.com
www.Thomasindustriesinc.com

*DATA SUBJECT TO CHANGE WITHOUT NOTICE