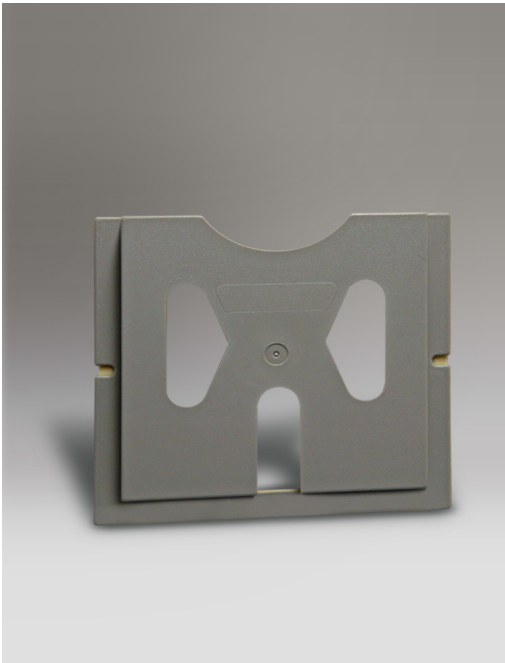
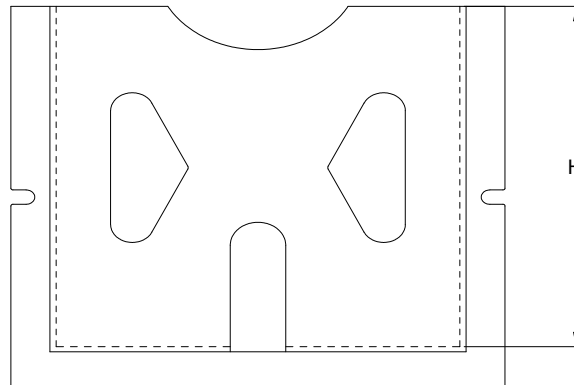
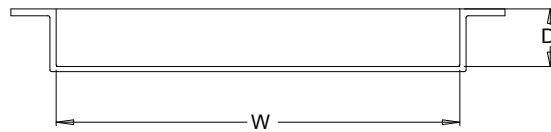


Print Pockets



- Print pockets can be placed anywhere within enclosure via adhesive tape flanges.
- Light gray in color.

Print Pocket Catalog Number	Print Pocket Size H x W x D
ENPP-0606	5.91" x 5.78" x 1.00"
ENPP-0909	8.625" x 9.06" x 1.125"



NOTE: ALL DIMENSIONS ARE INSIDE DIMENSIONS REFLECTING USEABLE AREA.

ACCESSORIES



211 INDUSTRIAL COURT
WABASHA, MN 55981

Phone: (651) 565-3395
 Fax: (651) 565-2787
 E-mail: info@thomasindustriesinc.com
www.thomasindustriesinc.com

*DATA SUBJECT TO CHANGE WITHOUT NOTICE



**Remember Thomas
Industries for all of
your sheet metal
stamping needs!**



211 INDUSTRIAL COURT
WABASHA, MN 55981

*DATA SUBJECT TO CHANGE WITHOUT NOTICE

Phone: (651) 565-3395
Fax: (651) 565-2787
E-mail: info@thomasindustriesinc.com
www.thomasindustriesinc.com